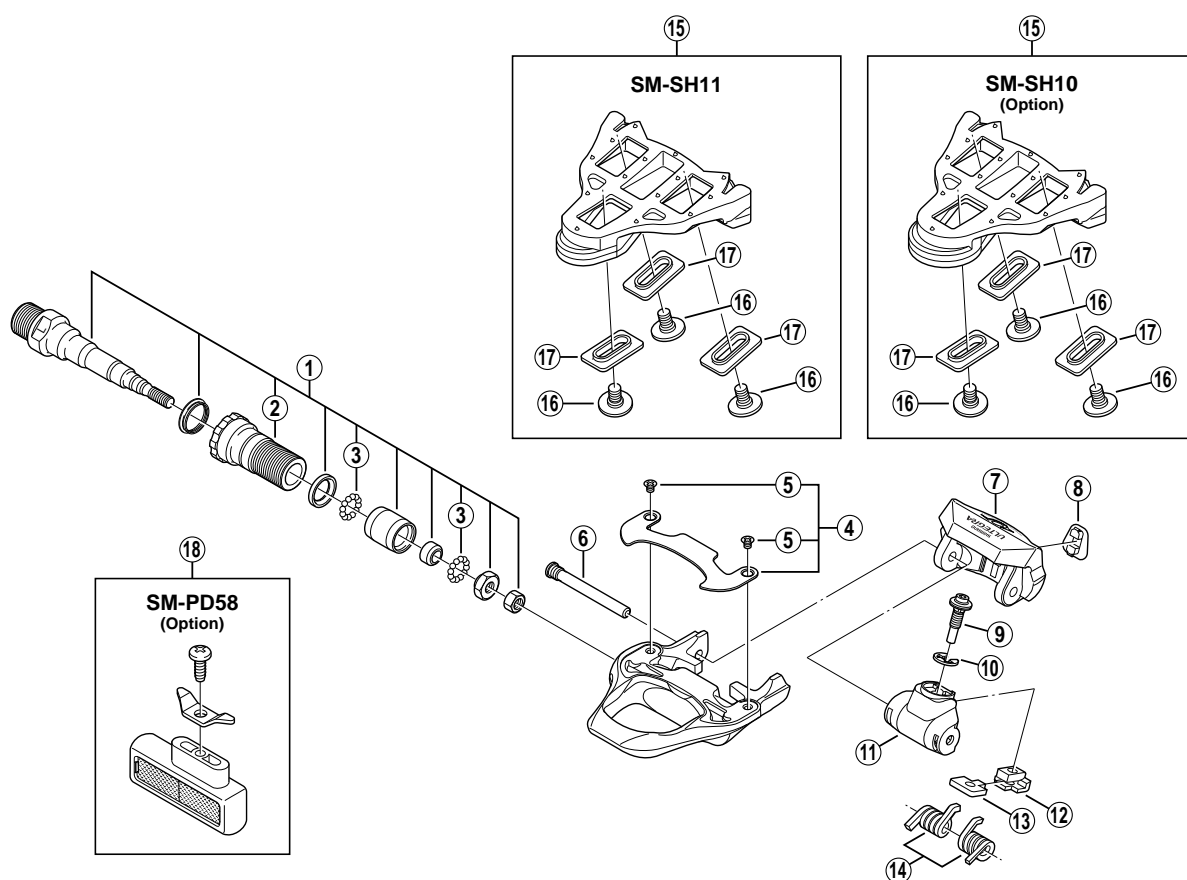


ULTEGRA SPD-SL Pedals

PD-6620

PD-6620-G Ice Grey Version



Note: Because the threaded part of the binding pin (item no. ⑥) has been coated with screw locking adhesive, after removal, a new binding pin should be used in place of the old pin.

ITEM NO.	SHIMANO CODE NO.	DESCRIPTION	INTERCHANGEABILITY	
			PD-7810	PD-8610
1	Y-45J 98010	Pedal Axle Assembly (Right / B.C.9/16" x 20T.P.I.)		A
	Y-45J 98020	Pedal Axle Assembly (Left / B.C.9/16" x 20T.P.I.)		A
2	Y-43Z 13100	Lock Bolt (Right)		A
	Y-43Z 14100	Lock Bolt (Left)		A
3	Y-41N 98030	Steel Ball (3/32" 62 pcs.)	A	A
4	Y-42T 98030	Body Cover & Fixing Screws	A	
5	Y-42T 05000	Body Cover Fixing Screw	A	
6	Y-426 10300	Binding Pin	A	A
7	Y-42U 02300	Binding	B	B
8	Y-42U 10300	Indicator	B	A
9	Y-45F 04100	Spring Adjustment Bolt	A	A
10	Y-42U 16000	Adjust E-Ring	A	A
11	Y-42U 11700	Spring Cover	B	B
12	Y-42U 07000	Adjust Plate Cover	A	A
13	Y-42U 05000	Adjust Plate	A	A
14	Y-42U 98050	Spring (2 pcs.)	A	A
15	Y-42U 98010	SM-SH11 Cleat Set (Self-aligning mode/Pair/M5 x 8 mm)	A	A
	Y-42U 98020	SM-SH10 Cleat Set (Fixed mode/Pair/Option/M5 x 8 mm)	A	A
16	Y-42U 14200	Cleat Fixing Bolt (M5 x 8 mm / 1 pc.)	B	A
	Y-42U 98060	Cleat Fixing Bolt (M5 x 13.5 mm / 6 pcs. / Option)	B	A
17	Y-42U 15000	Cleat Washer (Black / 1 pc.)	A	A
	Y-42U 15010	Cleat Washer (Silver / 1 pc.)	A	A
18	Y-40R 98070	SM-PD58 Reflector Unit (Pair/Option)	A	A
	Y-40R 98080	SM-PD58 Reflector Unit (AS/Pair/Option)	A	A

A: Same parts.

B: Parts are usable, but differ in materials, appearance, finish, size, etc.

Absence of mark indicates non-interchangeability.

0704-2663A

Specifications are subject to change without notice.

SHIMANO