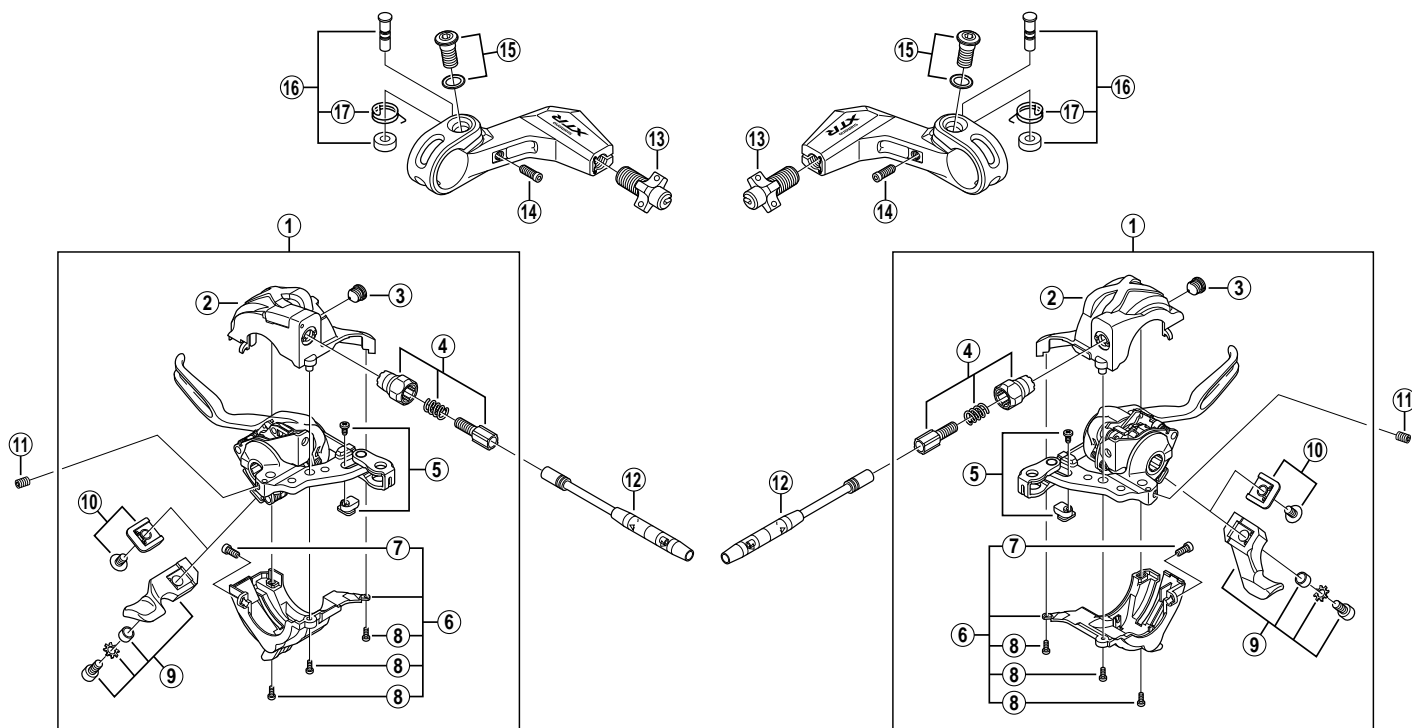


XTR Dual Control Lever ST-M970

For Left Hand

For Right Hand



ST-M960
ST-M961
ST-M966

ITEM NO.	SHIMANO CODE NO.	DESCRIPTION	INTERCHANGEABILITY
1	Y-6LJ 98010	R.H. Main Lever Assembly	
	Y-6LJ 98020	L.H. Main Lever Assembly	
2	Y-6LJ 01000	R.H. Top Cover	
	Y-6LJ 98030	L.H. Top Cover	
3	Y-6CD33000	Inner Hole Cap	
4	Y-6LJ 98040	Shifting Cable Adjusting Bolt Unit	B B B
5	Y-6LJ 98050	Adjustment Block & Screw	A A
6	Y-6LJ 98060	R.H. Bottom Cover & Fixing Screws	
	Y-6LJ 98070	L.H. Bottom Cover & Fixing Screws	
7	Y-6JJ 14011	Cover Fixing Screw (M3 x 7)	
8	Y-6LK 47000	Cover Fixing Screw	
9	Y-6LJ 98080	R.H. Release Lever & Fixing Bolt (M4 x 8)	
	Y-6LJ 98090	L.H. Release Lever & Fixing Bolt (M4 x 8)	
10	Y-6LK 98110	Release Lever Cap & Fixing Screw (M4 x 6)	A A
11	Y-8SZ 07100	Lever Axle Fixing Bolt	
12	Y-6LJ 98120	R.H. Indicator Unit	
	Y-6LJ 98130	L.H. Indicator Unit	
13	Y-6GR86100	Brake Cable Adjusting Bolt	B B
14	Y-6AM82020	Grip Adjusting Bolt (M4 x 10)	A A
15	Y-6AU98090	Clamp Bolt (M8 x 16) & Washer	A A A
16	Y-6LJ 98140	R.H. Lever Axle Unit	
	Y-6LJ 98150	L.H. Lever Axle Unit	
17	Y-6GR85100	R.H. Return Spring	
	Y-6GR85000	L.H. Return Spring	

A: Same parts.

B: Parts are usable, but differ in materials, appearance, finish, size, etc.

Absence of mark indicates non-interchangeability.

0706-2760A

Specifications are subject to change without notice.

SHIMANO